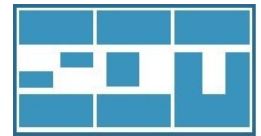


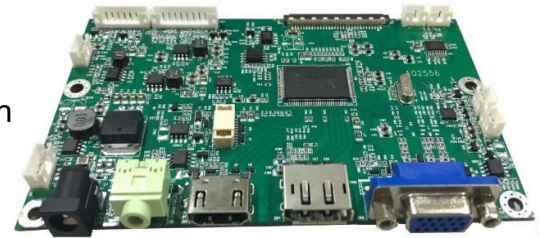
# SD-417 KT-417

Standard AD board & kit for LCD display



## Features

- VGA, HDMI, DP, Audio input
- Optional on-board DP input wafer
- Flexible, low cost and high performance
- For industrial, kiosk, gaming, digital signage application
- For 5.7" - 70" LCD panel with 1, 2 lanes eDP interface
- Dual channel stereo audio with 8 ohm 2W x 2
- Support RS232 and IR remote control



## Specifications

Video	Hor. Frequency	30 ~ 94 KHz
	Ver. Frequency	48 - 75 Hz
	Resolution	1920x1080 @60Hz
	Pixel rate	210MHz for analog
		225MHz for digital
Plug & Play	DDC/CI	
Colors	6/8 bit 16.7M true color	
	9300K, 6500K, 5700K, user mode	
OSD adjustment	Power, Menu, Up, Down, Source	
	English, Chinese(T)	
Dimension	130 (L) x 81 (W) x 14 (H) mm	
	Packing quantity	50 pcs / carton
Agency	FCC / CE compliance	

Input	VGA connector	15 pin D-sub
	on-board DP wafer	
	HDMI connector	HDMI v1.4
	Display port	V 1.2
Power	Audio connector	3.5mm phone jack
	DC connector	2.1mm diameter
	DC input*	12 Vdc / 0.7A
	Consumption	< 8W
	Power saving	< 1W
	Management	VESA DPMS
	Panel selection	3.3V / 5V / 12V
Temperature	Auxiliary o/p	12V / 5V
	Operation	0 ~ 70 degree C
	Storage	-20 ~ 80 degree C

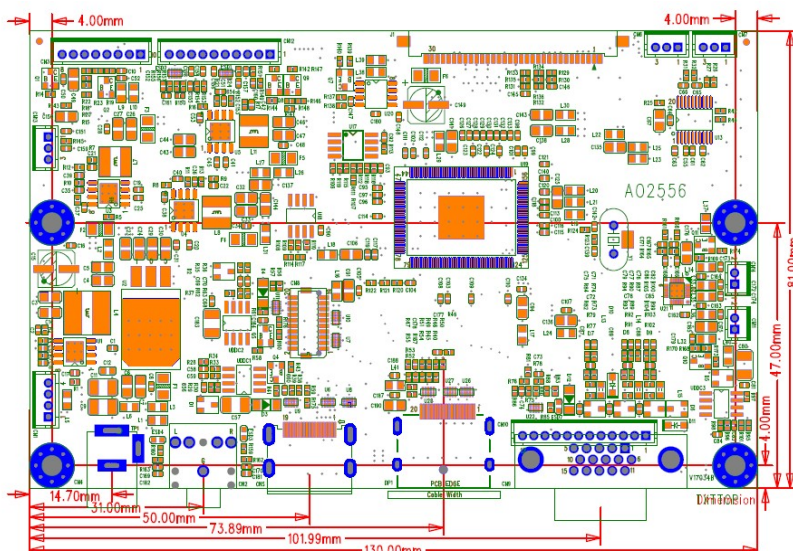
\* Changeable to 2.5mm diameter DC jack.

## Ordering information

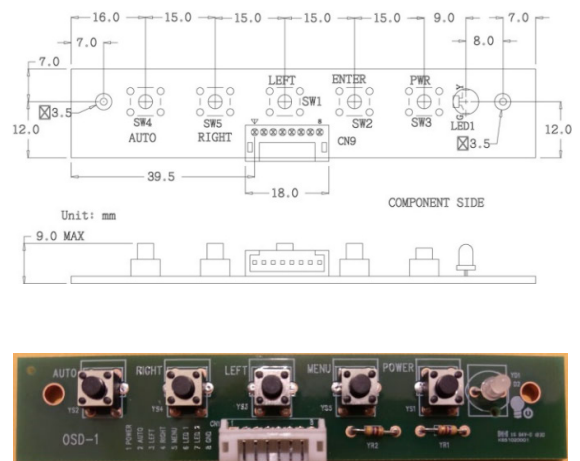
- Kit accessory :
  - 1). OSD board
  - 2). OSD wire
- Selected options :
  - 1). LVDS wire
  - 2). LED wire
  - 3). VGA cable
  - 4). HDMI cable
  - 5). LED controller
  - 6). Power adapter
  - 7). Power cord
  - 8). Audio cable
  - 9). DP cable

## Product drawing

AD board



OSD board



\* All specification and photos are subject to change without notice.