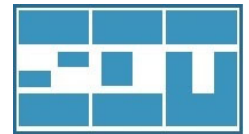


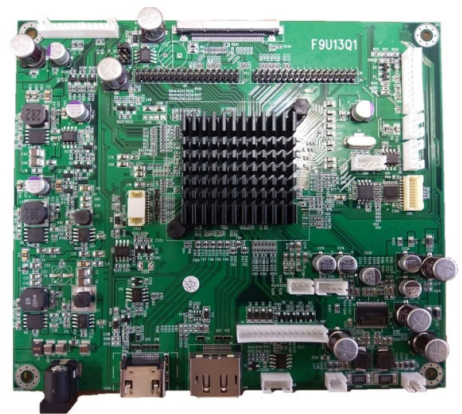
SD-414, KT-414

Standard AD board & kit for 4Kx2K LCD display



Features

- HDMI, DP, on-board VGA/Audio input
- SD-414-1 for 4 ch LVDS / 4 lanes eDP output
- SD-414-2 for 4 ch LVDS / 8 pairs V-by-one output
- High performance 4096x2160 @60Hz
- High performance scaling and PQ engine
- For large size digital signage application
- Dual channel stereo audio with 4 ohm 5W x 2
- Support two windows PIP/PBP
- Optional RS232 and IR control



Specifications

Video	Hor. Frequency	23 ~ 153 KHz
	Ver. Frequency	50 - 75 Hz
	Resolution	4096x2160 @60Hz
	Pixel rate	205MHz for VGA
		18G bps for HDMI
21.G bps for DP		
Plug & Play	DDC/CI	
Colors	10 bit 1074M true color	
	9300K, 6500K, 5700K, user mode	
OSD adjustment	Power, Menu, Up, Down, Source	
	English	
Dimension	150 (L) x 132.5 (W) x 14 (H) mm	
	Packing quantity	50 pcs / carton
Temperature	Operation	0 ~ 70 degree C
	Storage	-20 ~ 80 degree C

Input	VGA connector	14 pin on-board wafer
	HDMI connector	20 pin on-board wafer
	HDMI connector x2	HDMI v2.0, type A
	Display port	V 1.2a HBR2
	Audio connector	3 pin on-board wafer
	DC connector	2.1mm diameter
Optional input	UART connector	4 pin wafer
	IR connector	3 pin wafer
Power	DC input	12 Vdc / 0.8A
	Consumption	< 10W
	Power saving	< 0.5W
	Management	VESA DPMS
	Panel selection	PVcc / 5V / 12V
	Auxiliary o/p	12V / 5V
Agency	FCC / CE compliance	

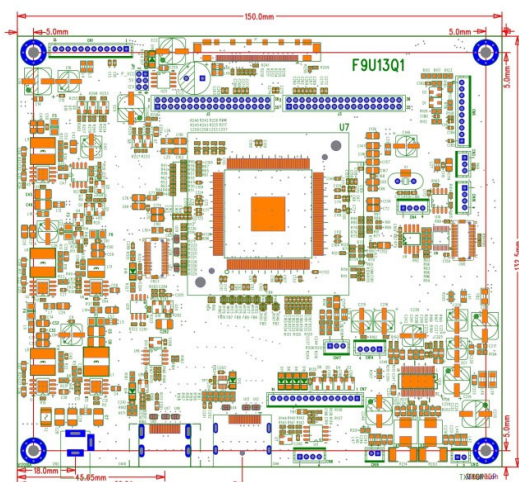
Ordering information

- Kit accessory :
 - 1). OSD board
 - 2). OSD wire
- Selected options :

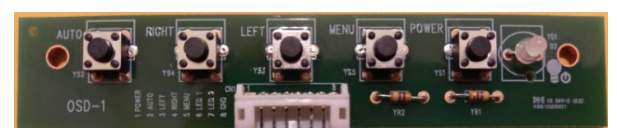
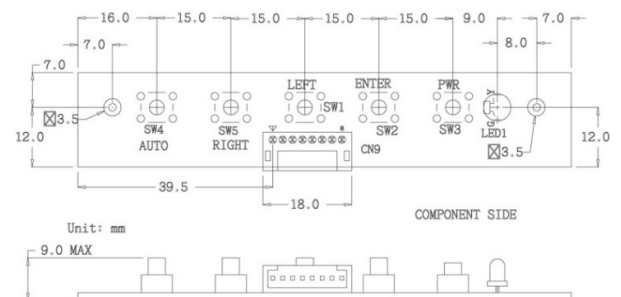
1). eDP/Vx1/LVDS cable	2). LED wire	3). VGA cable
4). HDMI cable	5). DP cable	6). LED controller
7). Power adapter	8). Power cord	9). Audio cable
10). Speaker	11). IR board	12). IR remote controller

Product drawing

AD board



OSD board



* All specification and photos are subject to change without notice.